



Shrink Sleeve Solutions
To Make Your Product **Stand Out**



CH-100

Tamper Evident Banding

TAMPER BANDING FOR LESS

The CH-100 Tamper Evident Band applicator from American Film & Machinery is an economy level shrink band applicator designed to apply tamper evident bands on a variety of containers. The CH-100 is designed for low to moderate production rates and is a perfect solution for industries including food and beverage, pharmaceutical, nutraceutical, health and beauty, consumer goods, chemical, and other manufactured goods.

INDUSTRIAL DESIGN

The CH-100 is a fast and efficient butterfly mandrel style tamper band applicator engineered to meet the demand of your workflow. Designed for 24 hour operation, CH-100's simple and low maintenance design allows for quick film change and maximum uptime. CH-100's compact housing is constructed from 304 grade stainless steel and anodized aluminum to provide strength and reduce vibration while offering quiet operation. Product runs are programmed with the user-friendly touch-screen control interface, making setup and operation fast and easy.

AROUND THE CLOCK OPERATION

CH-100 Tamper Band Applicators are designed with stepper motor driven, single film unwind with tension control, cutter assembly, and pneumatic cylinder to provide accurate and consistent tamper band application. CH-100 has been engineered to handle round bottles made of plastic, glass, or metal at speeds of up to 120BPM.

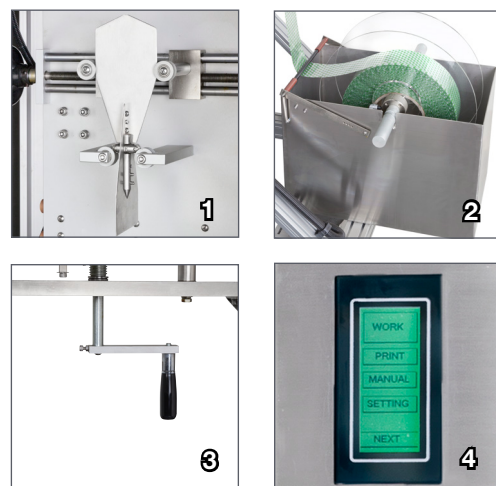
The single blade guillotine cutting mechanism provides extremely smooth, even cutting of PVC/PETG film 50 to 70 microns in thickness.

SIMPLE DESIGN, LOW MAINTENANCE

Our machines feature a single unwind system with tension control for proper film alignment, and our photo eye sensor system allows for register cutting, guaranteeing accurate cutting of the film for consistent band application on the container. The CH-100 also comes with our quick change system for switching mandrels with a turn of a knob. Along with the mandrel, the cutter assembly has only two levers to turn, keeping your downtime to a minimum.

THE RIGHT CHOICE

Rugged design. Maximum uptime. Lower cost of ownership. Your benefits go on and on. When it comes to shrink sleeve and tamper band application, rely on American Film & Machinery to provide the right solution for your shrink sleeve labeling needs.



1. Butterfly Mandrel

CH-100's Butterfly Mandrel is an ideal solution for accurate placement of shrink and tamper bands on a variety of containers

2. Single Unwind System

The Single Unwind System with tension control ensures proper film alignment for accurate feeding and cutting

3. Simple Conveyor Height Adjustment

Easy-to-use hand crank allows for ideal height adjustment on virtually any conveyor

4. Control Interface

Product runs are programmed with the user-friendly touchscreen control interface

TECHNICAL SPECIFICATIONS

Power	1 Phase 220V
Film Thickness	0.05mm - 0.07mm
Film Lay Flat	40mm - 150mm
Cut Length	20mm - 50mm
Machine Dimensions	1000mm (W) x 1130mm (L) x 1620-2000mm (H) 39.4" (W) x 44.5" (L) x 63.8" - 78.7.6" (H)
Speed	20-120CPM; timing screw required for speeds 75-120 CPM

Make your products stand out among the competition with AFM Shrink Sleeves and Tamper Evident Banding



©2022 American Film & Machinery. Specifications subject to change. All trademarks are the property of their respective owners. Product samples shown illustrate the capabilities of AFM and do not necessarily represent a business relationship between the companies.



7041 Boone Avenue North, Brooklyn Park, MN 55428
(714) 974-9006 www.afmsleeves.com
info@afmsleeves.com

STANDARD COMPONENTS:

- Stepper motor driven
- butterfly mandrel
- Pneumatic cutting blade
- Photo eye for registered cutting
- Single unwind system and tension control

OPTIONAL FEATURES & COMPONENTS

- Label tamp down device
- Timing screw or wheel



ENGAGE technologies corporation
042822 Rev A